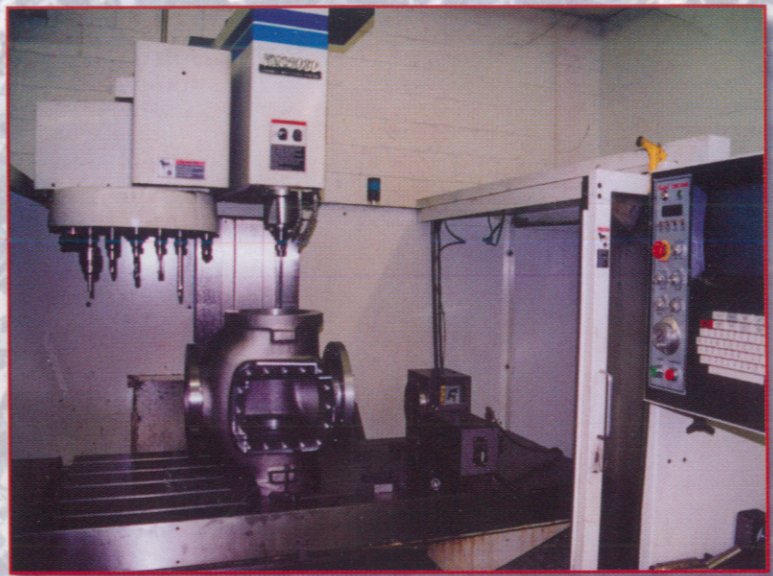
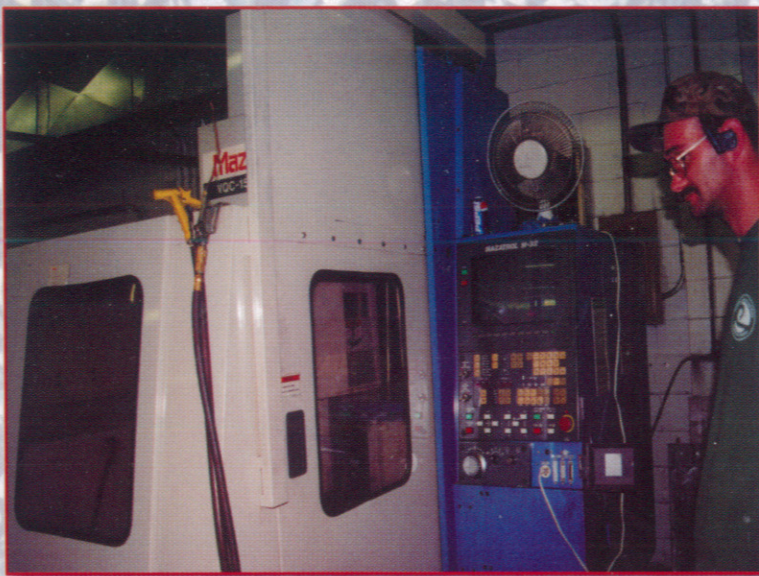


PETTEY MACHINE WORKS, INC.

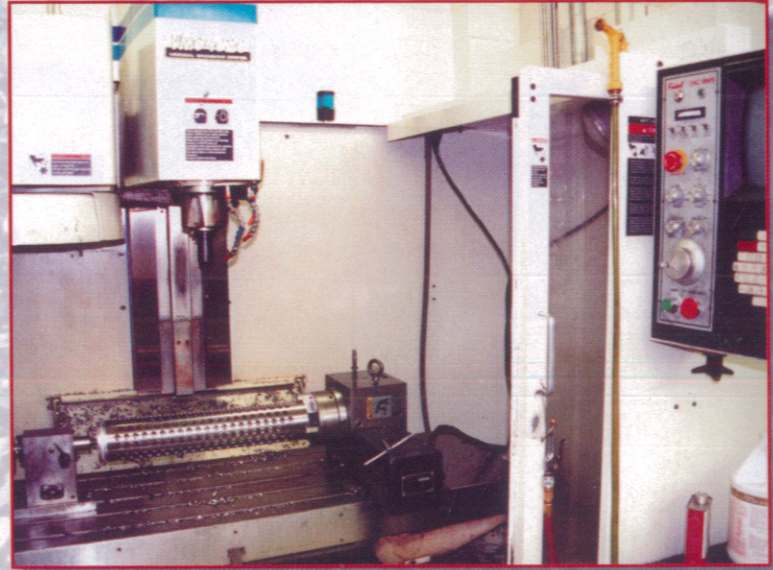
*Precision Machining,
Conventional and CNC*



CNC Machining Centers



CNC Turning



CNC Machining With 4th Axis



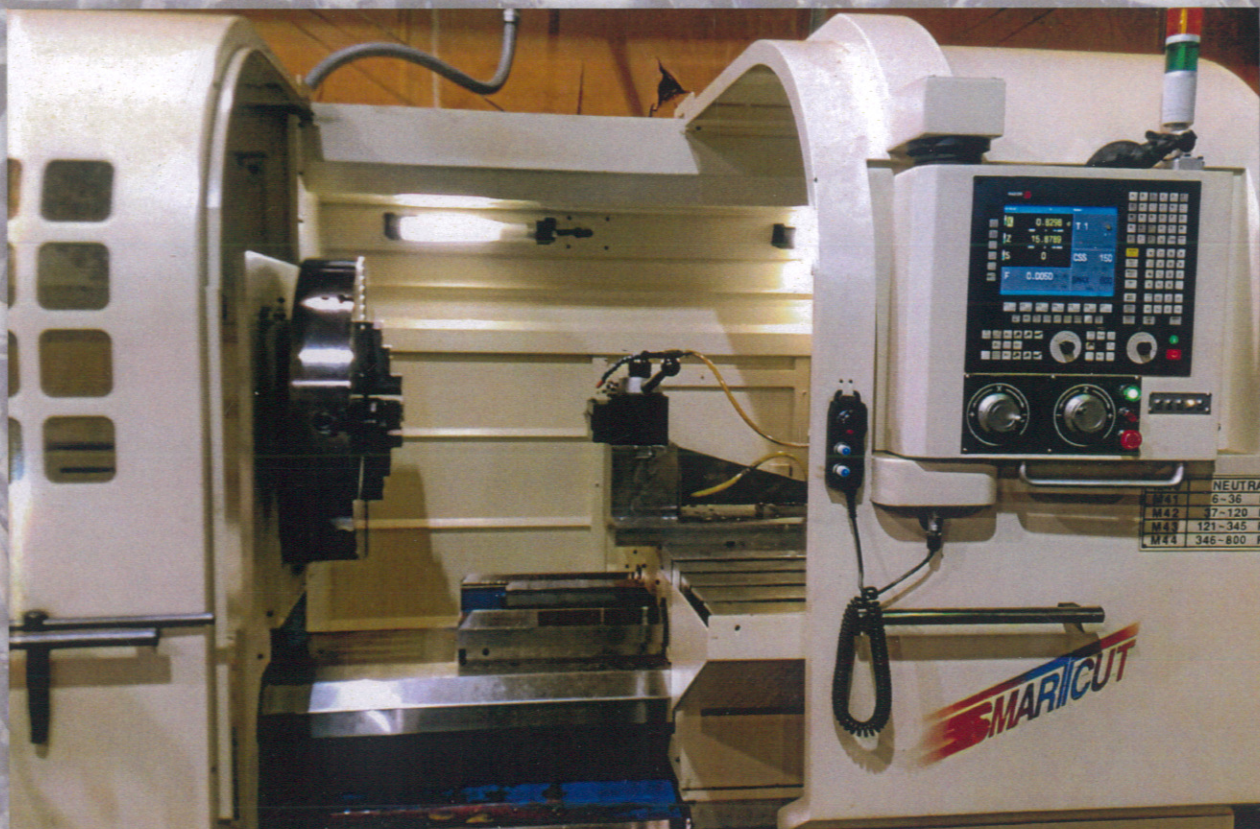
One Part CNC Turning



CNC Turning With Live Tooling and Y Axis

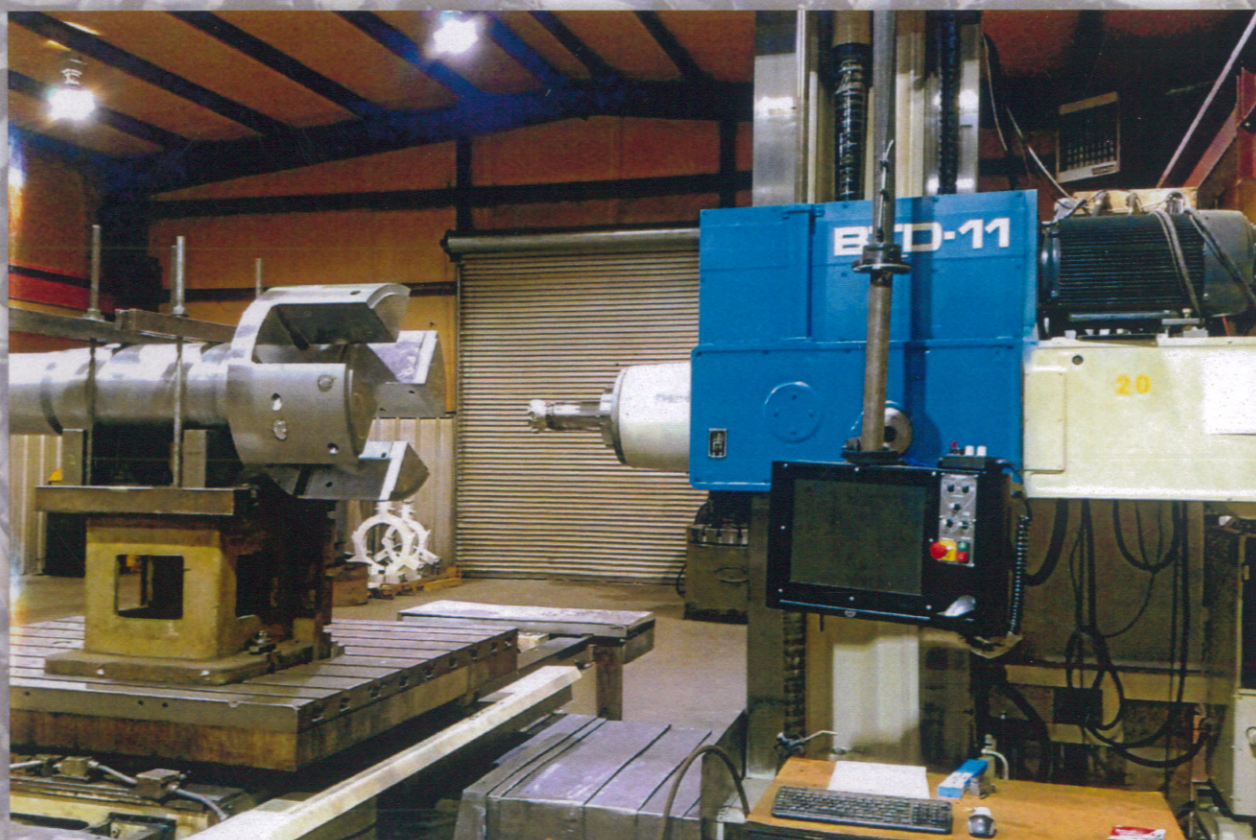


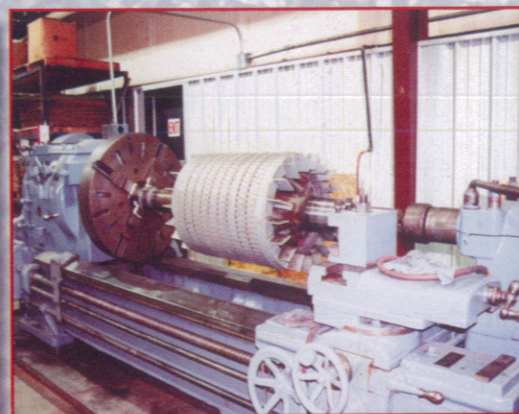
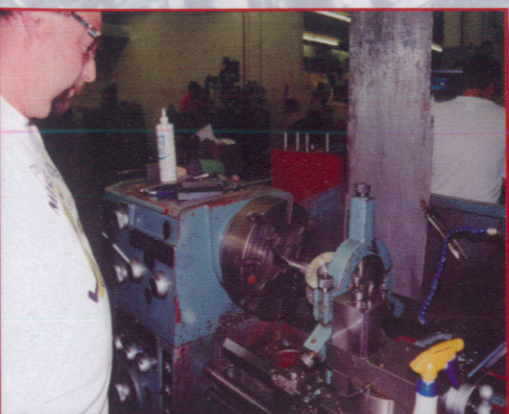
SUMMIT GAP BED CNC LATHES WITH A 6" BORE
42"-52" X 120" CENTERS



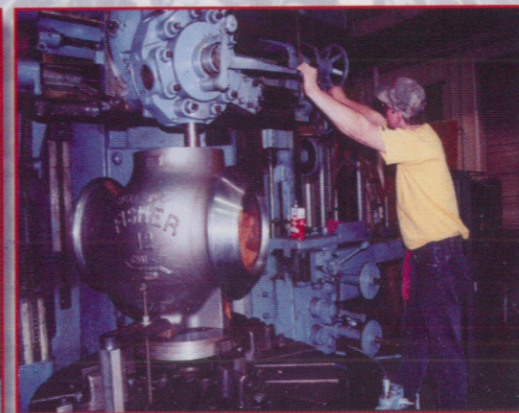
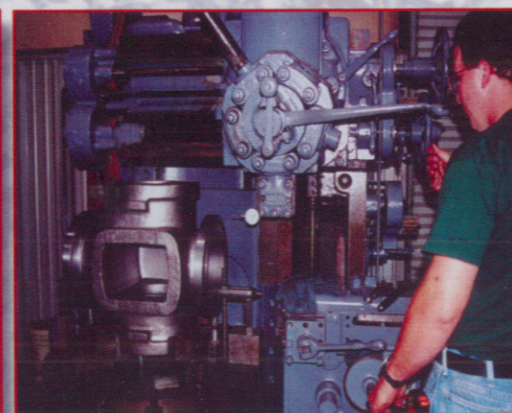
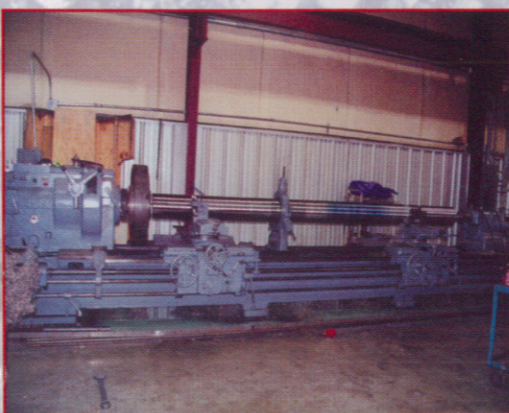


**TOSHIBA CNC HORIZONTAL BORING MILL
PROGRAMMABLE ROTARY TABLE**





Engine Lathes Large and Small



**Engine Lathe
40 ft. Long**

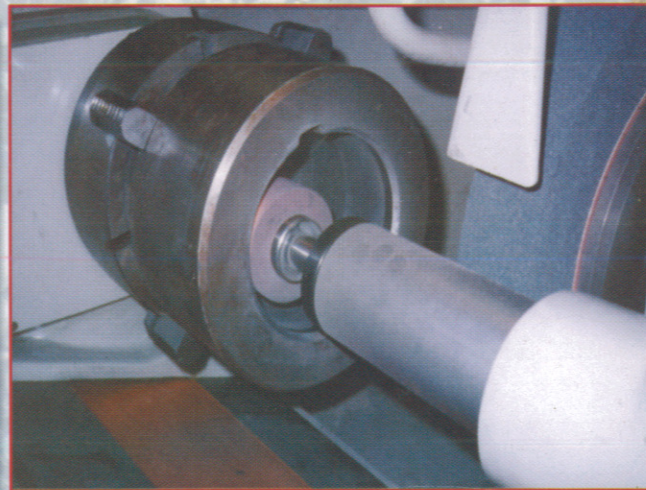
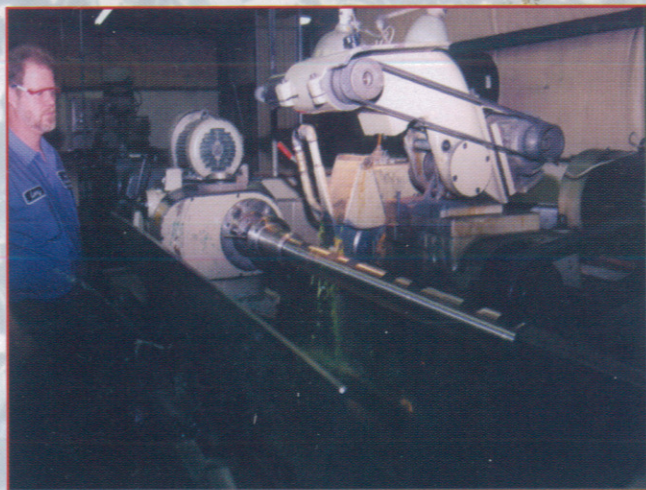
**Large Diameter Turning
Up To 57" Diameter**



Fabrication

**Mill Work Large
and Small**

**Services
Available**
General Machine
Shop Services

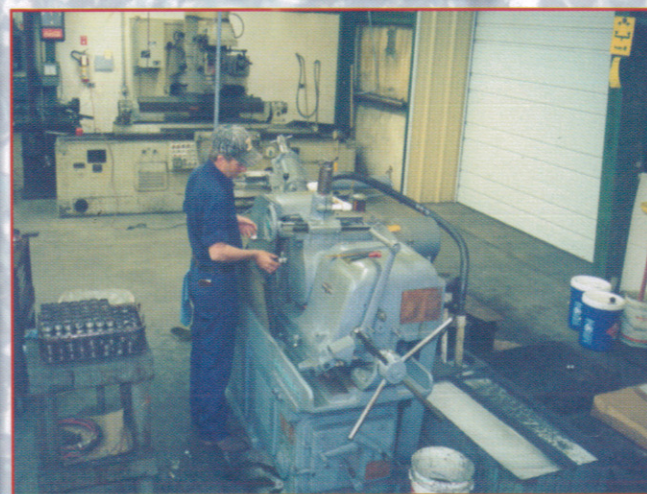
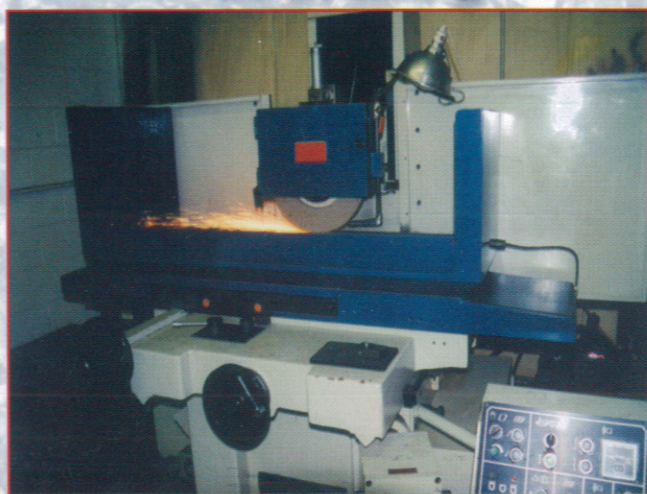


O.D. Grinding

I. D. Grinding

Machining
Turning: CNC
and Engine
Lathes
Milling: CNC
and Manual
Drilling
Grinding
Sawing

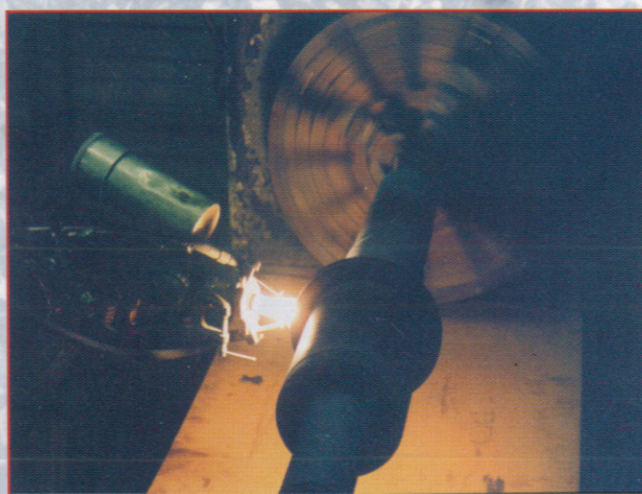
Metallizing
Ceramic and
Metal Coating



Surface Grinding

Centerless Grinding

Fabrication
Welding
Wire EDM
Sand Blasting
Painting
Quality Control



Metallizing

CMM Inspection



PETTEY MACHINE WORKS, INC.

*Precision Machining,
Conventional and CNC*

**16 N. Seneca Dr. • P.O. Box 729
Trinity, AL 35673**

We at Pettey Machine Works, Inc. would like to show you what we can do for you. From the opening of my small job shop in April, 1968, giving special attention to our customers has been our main purpose. Our goal has been to perform quality work at reasonable and fair prices. We look forward to serving your needs and desires in machine work, large or small, routine or special one-of-a-kind projects. We at Pettey Machine Works, Inc. are totally committed to quality, service and customer satisfaction.

**Billy D. Pettey
President**

Phone (256) 355-0085 • Fax (256) 355-0243